

Les voitures européennes des années 20

Marque	Modèle	Année	Sportivité	catégorie
Citroën	A	1919		3
DFP	A2000	1919		4
Farman	A6A et A6B	1919		4
Voisin	C3	1919	+1	4
Ballot	« 3L grand prix »	1920	+1	5
Bugatti	Brescia type 13	1920	+1	4
Bugatti	Brescia type 22	1920	+1	4
Bugatti	Brescia type 23	1920	+1	4
Ford-France	T	1920	-1	3
Berliet	VB	1921		3
Bignan	3 litres série 13000	1921		4
Chenard et Walker	TT	1921		3
Citroën	C3 « trèfle »	1921	-1	3
Hispano Suiza	H6B	1921	+1	4
Amilcar	CC	1922		3
Ballot	2LT	1922		4
Bellanger	A1	1922		3
Bugatti	30-38	1922	+1	4
Citroën	B2	1922		3
Delage	CO2 « Grand Sport »	1922		4
Mathis	SB	1922		3
Panhard et Levassor	X29	1922	+1	4
Renault	NM « 40CV »	1922		4
Benjamin	P2	1923	+1	3
Delage	DI	1923		4
Peugeot	153 BRA	1923		3
Berliet	VK	1924		4
Bignan	2 litres	1924	+1	4
Bugatti	35	1924	+1	5
De Dion Bouton	IM	1924		3
Delahaye	87	1924		3
Mathis	P	1924	-1	3
Peugeot	172 quadrillette	1924		3
Peugeot	177	1924		3
Amilcar	CGS	1925	+1	4
Bugatti	35A	1925	+1	4
Bugatti	35C	1925	+1	5
Bugatti	39	1925	+1	5
Panhard et Levassor	X41	1925	+1	4
Peugeot	174	1925	+1	4
Voisin	C7	1925		3
Bugatti	35B	1926	+1	5
Bugatti	37	1926	+1	4
Bugatti	37A	1926	+1	4
Guyot	GS5	1926	+1	5
Hotchkiss	AM2	1926		4
Lorraine Dietrich	B3/6	1926	+1	4

Les voitures européennes des années 20

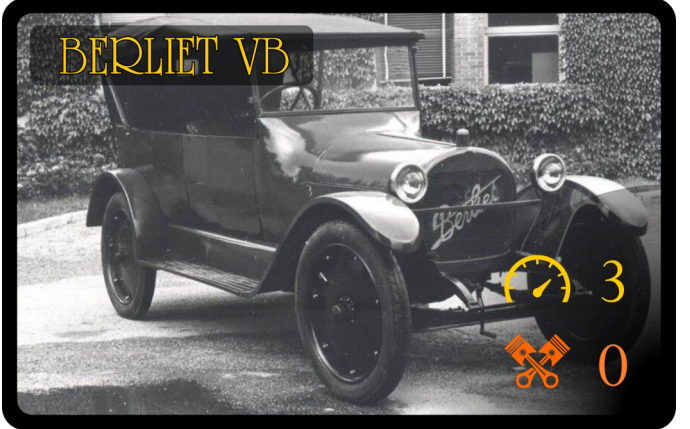
Panhard et Levassor	X38	1926	+1	4
Amilcar	CGSS	1927	+1	4
Amilcar	MC6	1927	+1	5
Aries	GP2	1927	+1	4
BNC	527	1927		4
BNC	527C	1927	+1	4
Bugatti	43	1927	+1	4
Bugatti	41	1927	+1	5
Chenard et Walker	Y3(tank)	1927		4
Citroën	B14	1927	-1	3
Delage	1500 course	1927	+2	5
Delage	DMS	1927	+1	4
Farman	NF1	1927		4
Mathis	MY	1927		3
Voisin	C14	1927		4
Berliet	VIHF	1928		4
Buccali	TAV8	1928		4
Bugatti	35T	1928	+1	5
Delahaye	107	1928		4
Ballot	RH3	1929		4
Citroën	C4	1929		4
Darmont	Special	1929	+1	4
Peugeot	1783	1929		4
Renault	NN2	1929	-1	3
Renault	Vivasix	1929		4
Buccali	TAV16	1930	+1	4
Bugatti	54	1930	+2	5
Bugatti	50-50T	1930	+1	5
Delage	DR6-70	1930		4
Hispano Suiza	H6C	1930	+1	4
Alphi	2,6 litre	1931		4
Citroën	C6F	1931		4
Delage	D8	1931	+1	4
Mathis	PY	1931		4
Voisin	C23	1931	+1	4
Amilcar	CS8	1932		4
Delahaye	126	1932		4
Hispano Suiza	HS26 « junior »	1932	+1	4
Lorraine Dietrich	310	1932	+1	4
Renault	Reinastella	1932	+1	4
Citroën	8 « Rosalie »	1933		4
Delahaye	135 « coupe des alpes »	1934	+1	4
Hispano Suiza	J12 type 68	1934	+1	4
Hispano Suiza	J12 type 68B	1934	+1	5

Amilcar CC



3
0

BEULIET VB



3
0

Ballot 2LT



4
0

BIGNAN 3L



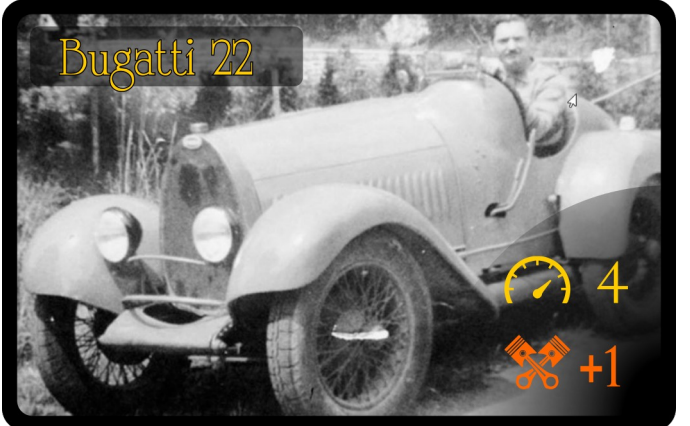
4
0

BALLOT 3L GP



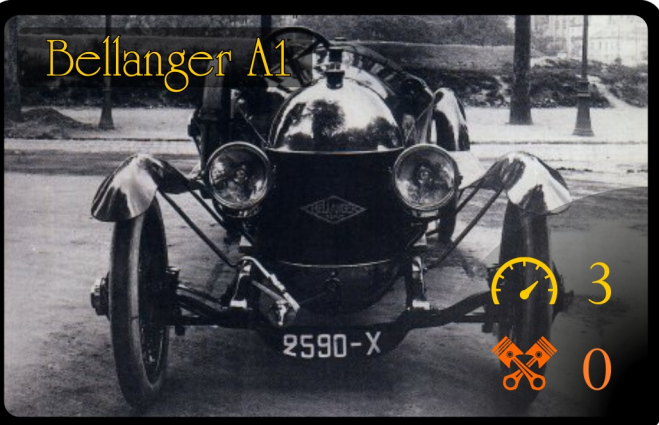
5
+1

Bugatti 22



4
+1

Bellanger A1



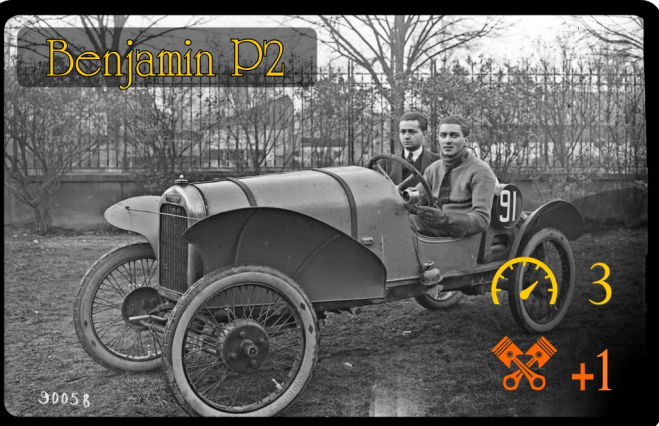
3
0

Bugatti 30



4
+1

Benjamin D2



3
+1

Bugatti 38



4
+1

Bugatti Brescia 13



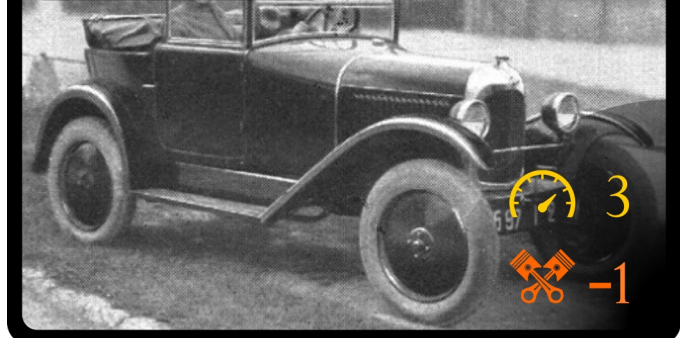
CITROËN A



Bugatti Brescia 23



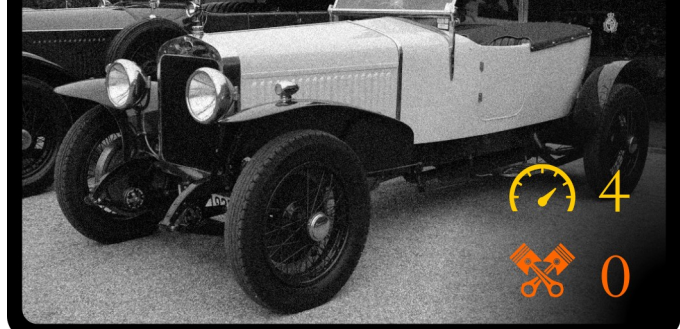
Citroën C3



Chenard & Walcker TT



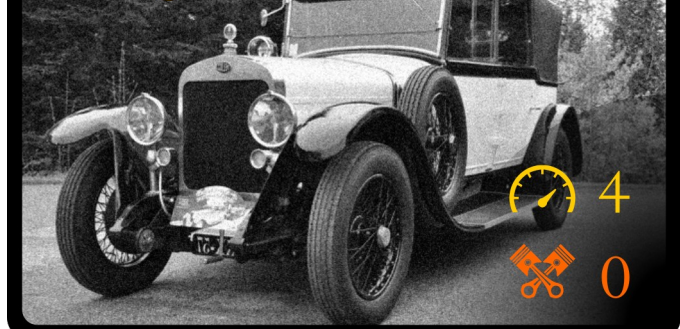
Delage CO2



CAMION



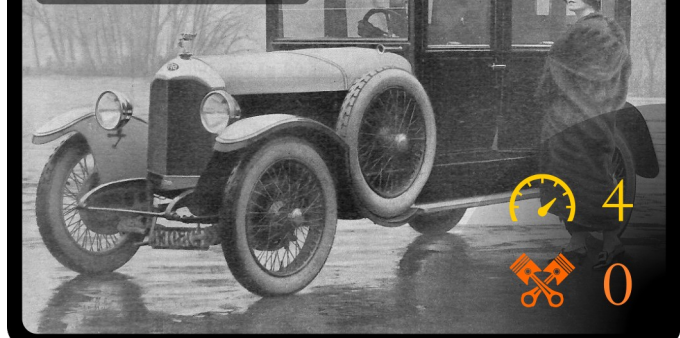
Delage DI



Citroën B2



DFD A2000



FARMAN A6B



4
0

Danhard Levassor X23



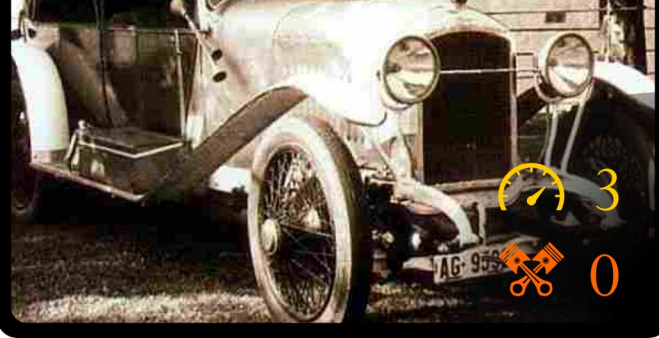
4
+1

FORD T



3
-1

Peugeot 153 BR



3
0

Hispano Suiza H6B



4
+1

Renault NM 40cv



4
0

Mathis SB



3
0

VOISIN C3



4
+1

MOTO



4
+1